

## ***Remove Z and M Attributes from Shapefiles***

**NAME:** Remove Z and M Attributes from Shapefiles 1.1

**Aka:** remove\_zm.avx

**Last modified:** November 22, 2005

**TOPICS:** PointZ, PolylineZ, PolygonZ, PointM, PolylineM, PolygonM, Measured

**AUTHOR:** Jeff Jenness

Wildlife Biologist, GIS Analyst  
Jenness Enterprises  
3020 N. Schevene Blvd.  
Flagstaff, AZ 86004 USA

Email: [jeffj@jennessent.com](mailto:jeffj@jennessent.com)

Web Site: <http://www.jennessent.com>

Phone: 1-928-607-4638

-Z-

**DESCRIPTION:** This is a fairly simple extension that takes shapefiles with Z or M attributes and converts them into basic shapefiles. I wrote this because many of my other extensions only work with Point, Line or Polygon features and they crash when confronted with a PointZ, PolylineZ, PolygonZ, PointM, PolylineM or PolygonM feature. Often the Z or M attributes are not necessary for the types of analyses those other extensions do, so users can use this extension to make a usable copy of their data to use with those extensions.

**REQUIRES:** This extension requires either a Z- or M-type feature theme to be present and selected in your view.

This extension requires that the file "avdlog.dll" be present in the ArcView/BIN32 directory (or \$AVBIN/avdlog.dll) and that the Dialog Designer extension be located in your ArcView/ext32 directory, which they usually are if you're running AV 3.1 or better. The Dialog Designer doesn't have to be loaded; it just has to be available. If you are running AV 3.0a, you can download the appropriate files for free from ESRI at:

<http://support.esri.com/index.cfm?fa=downloads.patchesServicePacks.viewPatch&PID=25&MetaID=483>


**REVISIONS:** Version 1.1 (November 22, 2005) revises the extension to correct a bug which produces an error message stating that "Wrong class for parameter 1 of request ReturnValue. Got a(n) Nil, expected a(n) Field."

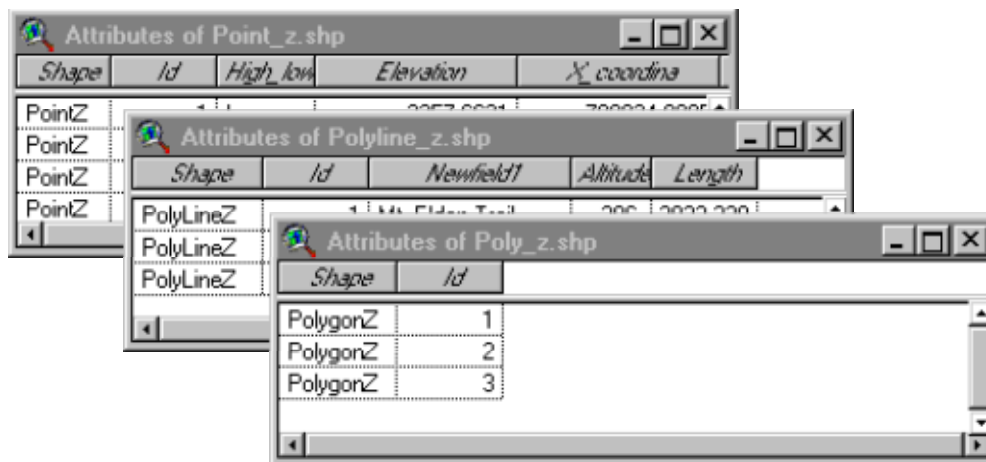
**Recommended Citation Format:** For those who wish to cite this extension, the author recommends something similar to:

Jenness, J. 2005. Remove Z and M Attributes from Shapefiles (remove\_zm.avx) extension for ArcView 3.x, v. 1.1. Jenness Enterprises. Available at:  
[http://www.jennessent.com/arcview/remove\\_z\\_m\\_attributes.htm](http://www.jennessent.com/arcview/remove_z_m_attributes.htm).

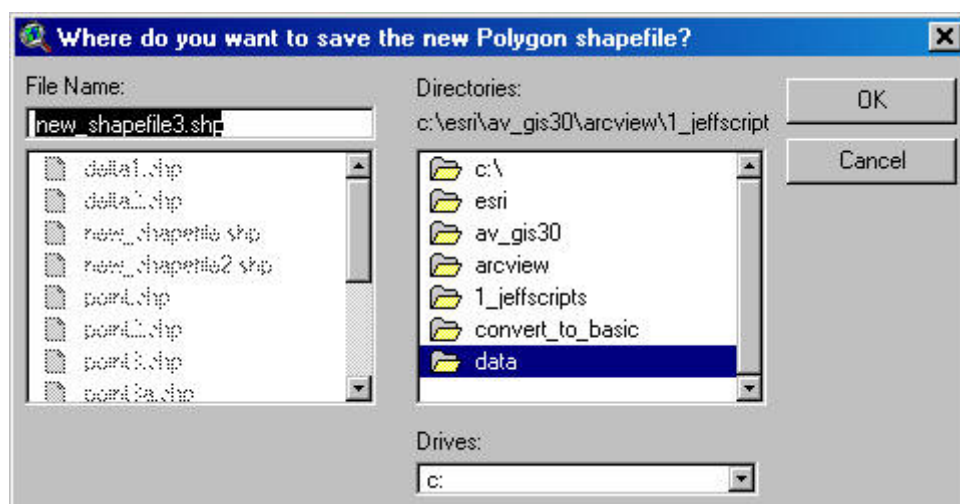
Please let me know if you cite this extension in a publication ([jeffj@jennessent.com](mailto:jeffj@jennessent.com)). I will update the citation list to include any publications that I am told about.

### General Instructions:

- 1) Begin by placing the "remove\_zm.avx" file into the ArcView extensions directory (../Av\_gis30/Arcview/ext32/).
- 2) After starting ArcView, load the extension by clicking on **File --> Extensions...**, scrolling down through the list of available extensions, and then checking on the checkbox next to the extension called "Convert Z/M to Shapes."
- 3) Open your view and find the  button.
- 4) This tool is intended to operate on a single active Z- or M-type feature theme. Select one from your View table of contents and the button will become enabled. The button will only be enabled if there is a single Z- or M-type feature theme active. These themes can be identified by opening the table and looking at the shape type listed in the Shape field:



- 5) When you click the button, the tool will ask you where you want to save your new shapefile, then it will create it and add it to your view:



---

Enjoy! Please contact the author if you have problems or find bugs.

Jeff Jenness  
Jenness Enterprises  
3020 N. Schevene Blvd.  
Flagstaff, AZ 86004  
USA

[jeffj@jennessent.com](mailto:jeffj@jennessent.com)  
<http://www.jennessent.com>  
(928) 607-4638

Updates to this extension and an on-line version of this manual are available at

[http://www.jennessent.com/arcview/remove\\_z\\_m\\_attributes.htm](http://www.jennessent.com/arcview/remove_z_m_attributes.htm).

---

Please visit *Jenness Enterprises* [ArcView Extensions](#) site for more ArcView Extensions and other software by the author. We also offer customized ArcView-based [GIS consultation](#) services to help you meet your specific data analysis and application development needs.

